



# Executive Wide Screens 8 meters wide



*Executive*<sup>™</sup>

Motorised Screens



**BLIND MAKERS**  
Residential Projects

# Executive™

Motorised Screens

## Executive Wide Screens

Innovative, stylish and attractive a single Executive Screen is capable of covering an opening as large as 8 metres wide and 5 metres high at the touch of a button. Add liveability, convenience and sophistication to any design project with the ability to control heat in summer and the cold in winter



### Features & Benefits

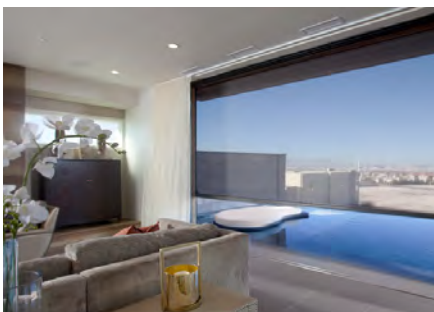
- Can be retro-fitted to existing homes and buildings
- Provides the functionality of a conventional screen, but disappears when not needed
- Increases access to natural ventilation and daylight
- Provides heat reduction and glare from direct sunlight and solar reflective structures
- Reduces energy usage
- Extends the life of interior/ exterior furnishings by reducing UV related fading
- Allows for complete building integration with components that can be recessed into columns/posts and ceiling cavities
- All Executive models are powder coated using the Dulux and Interpon colour range
- Offers a range of mesh choices for insect control, solar shading and privacy
- Backed by Blindmakers limited liability warranty



## Applications

Ideal for residential, hospitality and residential construction or renovation projects, the Executive Screen covers all large application types, including:

- Balconies, pergolas, verandahs and outdoor entertaining areas
- Alfresco dining and courtyard areas
- Garages and oversized doors & windows
- Executive Screens can be integrated into every type of architectural style including wood, metal, brick, stucco, natural stone, and concrete



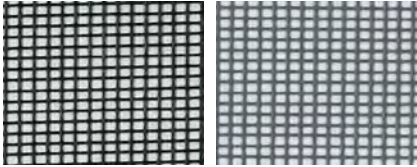
## Motors & Control Options

- SIMU Hz02 Motors with Hand Held Remote Controls, and optional Sun & Wind Sensors
- Direct integration into home automation systems
- SolarSmart motors systems, including battery pack and solar panel

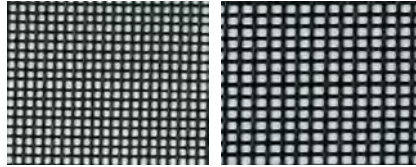
# The Executive Screen is the largest track guided motorised screen available globally, capable of covering openings of 8 metres wide x5 metres high in a single screen.

## Mesh Options

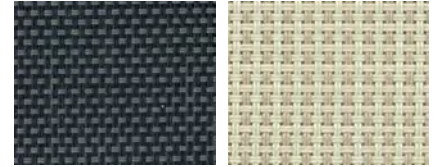
**Insect Mesh**  
58% Openness



**Solar Mesh**  
45% Openness

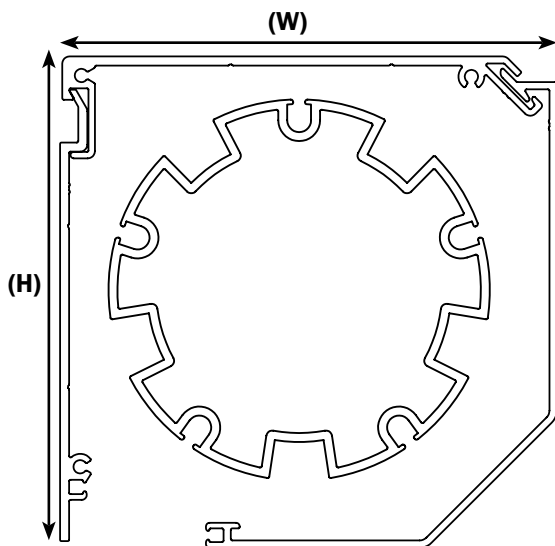


**Privacy Mesh**  
25% to 0% Openness

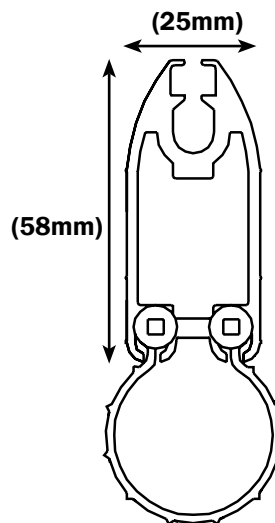


## Profiles & Opening Sizes

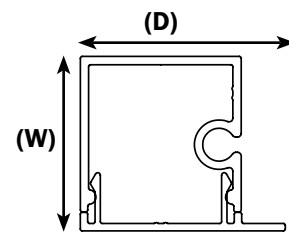
**Housing & Roller**



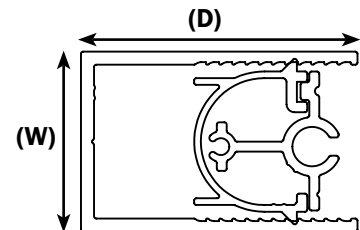
**Slide Bar**



**Standard Track**



**Recessed Track**



| Opening Size:                | Up to 3.5m wide & 2.5m high | Up to 6.2m wide & 3.3m high | Up to 8.0m wide & 5.0m high |
|------------------------------|-----------------------------|-----------------------------|-----------------------------|
| Housing Size (H x W):        | 100 x 100mm                 | 140 x 140mm                 | 180 x 180mm                 |
| Roller Diameter (D):         | 63mm                        | 102mm                       | 127mm                       |
| Standard Track Size (W x D): | 34 x 33mm                   | 39 x 45mm                   |                             |
| Recessed Track Size (W x D): | 35 x 35mm                   | 35 x 54mm                   |                             |

Discover how our Executive screen can bring greater comfort and beauty to your home

*Executive*  
Motorised Screens